

N O R T H L A N D

Welcome HOME

Digital Edition
Exclusively Sponsored by:



A GUIDE FOR NEW RESIDENTS COURTESY OF THE
NORTHLAND REGIONAL CHAMBER OF COMMERCE

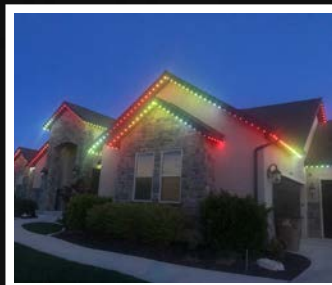
Permanent Holiday & Accent Lighting

Professionally Installed.

.....
Permanent Programmable Lights
Millions of Colors with
Thousands of Combinations

.....
Free Repair for 5 Years
Waterproof
Most Jobs Installed in 1 Day
Lifetime Warranty on All Parts

.....
Licensed & Insured
Financing Offered



Free Estimates
You Got the Lite Idea !



(913) 213-3383 | liteitupkcmo@gmail.com
www.liteitupkcmo.com



Welcome - Home -

We're conveniently located in your area!

Citizens Bank & Trust gives you all the convenient features needed to make your banking experience simpler and more intuitive to your lifestyle. Visit us locally or download our MobiCBT App for banking on-the-go!

You can also open an account or apply for a loan online at GoCitizens.bank.

Our Free Checking includes:

- FREE Debit Card
- FREE Bill Pay
- FREE Online Banking
- FREE Mobile Deposit
- FREE Mobile Banking

Competitive Loan Services:

- Home Equity Line of Credit
- Home Loans
- Auto Loans
- Credit Cards



- Additional Northland locations in Kearney & Smithville -

GoCitizens.bank

7553 NW Barry Road,
Kansas City, MO 64153
816-587-4332

8405 N. Oak Trafficway
Kansas City, MO 64155
816-505-7002

Member
FDIC





634 NW Englewood Road
 Kansas City, MO 64118
 816-455-9911
northland@northlandchamber.com
www.northlandchamber.com



MetroMedia, A Town Square
 Publications Company
 Copyright ©2020
 14300 Kenneth Road, Suite 210
 Leawood, KS 66224 | 913-951-8413
metromediapublishers.com

TABLE OF CONTENTS

Chamber Welcome	6
Welcome to Your New Home	8
Our Schools	12
Health Care	16
Northland Things To Do	20
Our Parks	26
Dining	30
Northland by the Numbers.....	34



FOR YOUTH DEVELOPMENT®
 FOR HEALTHY LIVING
 FOR SOCIAL RESPONSIBILITY

BETTER BEGINS HERE

When you join the Y, you're committing to more than simply becoming healthier. You are supporting the values and programs that strengthen our community. At the Y, children learn what they can achieve, families spend quality time together, and we all build relationships that deepen our sense of belonging.

In-Person and Virtual Exercise • Personal Training • Swim Lessons • Adaptive Programs • Youth Sports • Senior Programs

Special Offer: First Month Free + No Joining Fee with offer code CHAMBER2021
KansasCityYMCA.org/Join



VISIT OUR THREE Y LOCATIONS IN THE NORTHLAND:
 North Kansas City YMCA
 Platte County Community Center South (Parkville)
 Platte County Community Center North (Platte City)

"Hillcrest Platte County
helped me with a safe
place to live for my family
while I got back on my
feet!"



HILLCREST PLATTE COUNTY

HPC HOUSING PROGRAM

**WORKING HOMELESS
CHRONIC HOMELESS
SITUATIONAL
HOMELESS
INSECURELY HOUSED
EVICTED
PREVENTION**



SERVING THE LOCAL

VOLUNTEER-DONATE-SHOP THRIFT



WELCOME TO THE NORTHLAND!

Welcome to the Northland! The geographic area of what is commonly referred to as the Northland is Clay and Platte counties and is home to more than 360,000 residents. An interesting fact that most people don't know is 51% of Kansas City's land mass is located north of the river. More than one-third of Kansas City's population lives here as well.

The Northland is one of the fastest-growing areas in the state of Missouri, and is certainly the largest growth spot for the entire Kansas City metro. The Northland is such a unique area because of the small communities that are located within its borders: Parkville, Riverside, Platte City, Weston, Gladstone, Smithville, Liberty, North Kansas City, Excelsior Springs, Kearney, Pleasant Valley, and others join Kansas City as the many cities within our region. The Northland offers great neighborhoods with beautiful parks and award-winning trails, along with great shopping, entertainment venues, and dining options, which we think are all outstanding!

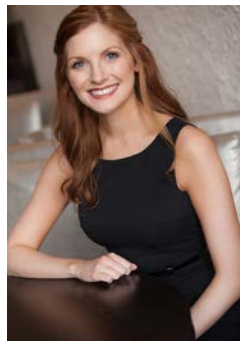
When we say the Northland is booming with development – we certainly mean it! Featured above is a rendering of the new Central Bank Sporting Complex slated to open in late summer 2022. Located at Hwy 152 and N. Platte Purchase Drive, this tournament-quality complex is the focal point of a 492-acre development, which includes a campus for Platte County R-3 School District, single and multi-family housing units, and commercial space for retail, office, restaurant, hotel, and entertainment destinations. Addition-

ally, our new single terminal at the KCI airport will open in March 2023. These are just a few examples of the exciting development projects happening here in the Northland.

As you chose your home in the Northland, education was most likely a determining factor in that decision. Once again, choice is very important and whatever district you choose – the option is an exceptional one. The Northland offers quality education for everyone.

The Northland Regional Chamber of Commerce is made up of business and community leaders that work to enhance the business community, economic growth and quality of life in the Northland. On behalf of our Board of Directors, our sustaining 1,400 business representatives, and our Chamber staff, we are ready to serve you and help make you a part of our community.

Again, welcome to the Northland – a great place to live, work, and play. You made the right decision!



Jenny Johnston
President
Northland Regional Chamber of Commerce

HIRING

AND

HIRING

AND

HIRING

AND

HIRING

AND

LET'S **THRIVE** TOGETHER

JOIN OUR TEAM TODAY!

- ✓ Lucrative Bonus and Commission Program
- ✓ Comprehensive Health Care
- ✓ High Potential Career Growth

We hire the best and the brightest. We invest heavily in your career, providing you with the tools and training you need to reach your full potential.

Put people first.
Drive breakthrough results.

 /fullpotentialsolutions

 www.fpsinc.com

 **FULL
POTENTIAL
SOLUTIONS**
PUT PEOPLE FIRST. DRIVE BREAKTHROUGH RESULTS.



WELCOME TO YOUR NEW HOME

Nestled just north of the Missouri River, the Northland is a safe haven for individuals and families seeking convenient access to Kansas City's vibrant tapestry.

Throughout the past 30 years, the Northland has enjoyed a tremendous amount of growth. Since 1992, the population has doubled and businesses are thriving. The Northland currently represents more than 360,000 residences in Clay and Platte counties, including areas such as North Kansas City, Parkville, Liberty, Gladstone, Claycomo, Riverside, Weatherby Lake, Lake Waukomus and Smithville. The Northland also extends farther north to include Platte City, Weston, Kearney and Excelsior Springs.

A boom of new homes, retail developments and businesses keep more than 30% of the Kansas City Metro residing in the Northland. The Kansas City Metro economy is on the rise, providing the Northland with many opportunities for businesses to start up and flourish.

Organizations, including the Northland Regional Chamber of Commerce, are dedicated to providing the support and meeting the demands of the economy.

Northlanders are dedicated to the region, working to continuously grow and improve the quality of life in our area.

You will certainly feel at home as you explore our museums or spend the day shopping in one of our outdoor shopping centers. You can even bring the entire family to Worlds of Fun for hundreds of different ways to laugh and play together. Families are sure to find plenty to do in the area's well-maintained parks and trails systems.

We hope you arrive hungry, too, so you can check out our legendary dining options, including upscale steakhouses and international cuisine with distinctly Italian and Argentinian dishes.

The opportunities are endless! The Northland is a great place to live, work and play. But don't just take it from us — see for yourself within the pages of this guide.



boutique DO-IT-YOURSELF *workshop*

HANDS-ON CLASSES TO CREATE CUSTOM & CHARMING HOME DECOR!

GIRLS' NIGHT OUT
PRIVATE EVENTS
BIRTHDAY PARTIES

DATE NIGHTS
CORPORATE EVENTS
KIDS' PARTIES

BOOK A SEAT & JOIN THE FUN!

www.ARWORKSHOP/KANSASCITYNORTH.com



TAKE \$15.00 OFF
When you use the code
NEWMOVERS

111 NE 91ST STREET, KANSAS CITY, MO 64155

816-837-0727



THE ReSALE SHOP

6601 N Oak Trafficway
Gladstone, MO 64118

Your donations and purchases held to fund the nine philanthropic programs of Assistance League of Kansas City.

www.alkc.org

Together...making our community better

HELP US MAKE A DIFFERENCE:
BECOME A VOLUNTEER !



- Innovative
- Affordable
- Hands-on



Check us out today!
missouriwestern.edu

Together we succeed

INNOVATIVE HIRING SOLUTIONS TO FIT **YOUR NEEDS**

Applying for jobs and hiring employees can be difficult and time consuming. But, with Express Employment Professionals, finding the right job or filling the right position is easy.

Call, come in, or go online today to see what Express can do for you.

Positions include:

- Administrative
- General Labor
- Skilled Labor
- Accounting & HR

Evaluation Hire, Permanent and Temporary Placement

(816) 994-2424
301 Armour Rd.
North Kansas City, MO 64116
Expresspros.com

Express[®]
EMPLOYMENT PROFESSIONALS





OUR SCHOOLS

Educating Our Youth

Education is a strong central focus here in the Northland, so it's no surprise that our students achieve some of the highest scores on state assessments. With more than 10 public school districts and 23 different private schools, the Northland is a great place for students to rise to their full potential.

Our students receive top level education from a variety of award-winning educators who make learning interactive and adaptable to their lives.

The Northland also provides multiple education facilities to help our students learn in unique ways. Some of these programs include the Northland Career Center, the Northland Center of Advanced Professional Studies (CAPS) and Park Hill Professional Studies. These programs provide hands-on opportunities and allow students to participate and learn in professional environments.

Clay-Platte Montessori School
816-741-6940
www.clayplattemontessori.com

Kearney R-1 School District
816-628-4116
<http://www.ksdr1.net/>

Liberty School District
816-736-5300
www.liberty.k12.mo.us

North Kansas City School District
816-321-5000
www.nkcschools.org

North Platte R-1 School District
816-450-3511
www.npppanthers.org

Northland Catholic Schools
816-453-3450
www.northlandcatholicschools.com

Northland Christian Education System
816-548-2222
www.northlandchristianed.com

Oakhill Day School
816-436-6228
www.oakhilldayschool.org

Park Hill School District
816-359-4050
www.parkhill.k12.mo.us

Platte County R-3 School District
816-858-5420
www.plattecountyschooldistrict.com

Smithville R-II School District
816-532-0406
www.smithville.k12.mo.us

West Platte R-II School District
816-640-2236
www.wpsd.net

HIGHER LEVEL EDUCATION IN THE NORTHLAND

With education being a part of “The American Dream,” it is no problem to get a quality education north of the river. The Northland has many higher education institutions, which allows students the opportunity to complete their degree and stay close to home. We look with pride at our higher educational opportunities and know how fortunate we are to have the outstanding educational systems right here in our

region. Our partnerships between the Northland Regional Chamber, our business members and education are vital to ensuring a strong unified voice in the Northland.

Bloch School of Management, UMKC
816-235-5530
www.bloch.umkc.edu

Graceland University
816-833-0524
www.graceland.edu

MCC – Maple Woods
816-604-3044
www.mmccckc.edu

Missouri Western State University
816-271-4100
www.missouriwestern.edu

Northwest Missouri State University
Kansas City Center
816-272-4621
www.nwmissouri.edu/kc

Park University
816-584-6202
www.park.edu

William Jewell College
816-415-5026
www.jewell.edu





THANK YOU FOR VOTING MCC-MAPLE WOODS AS “BEST IN THE NORTHLAND”

Metropolitan Community College is a gateway to a life-changing education and a workforce-ready skill set. With five campuses, MCC has a proud tradition of providing high-quality, affordable education to students in Greater Kansas City and the Northland. The campus is known for its general education classes and the Midwest's finest veterinary technology program.

Explore our many classes to find the right fit for you.



METROPOLITAN
COMMUNITY COLLEGE
MAPLE WOODS

YOUR COLLEGE.
FUTURE.

2601 NE Barry Road | Kansas City, MO, 64156
816.604.1000

MCCKC.EDU/MAPLEWOODS



NORTH OF THE ORDINARY



WE'RE MORE THAN A MALL.
WE OFFER AN EXPERIENCE
UNIQUE IN THE NORTHLAND
AND, IN MANY WAYS, UNLIKE
ANYTHING ELSE IN KANSAS CITY.
IT'S A PLACE YOU CAN TRULY
MAKE YOUR OWN, WHERE YOU
CAN BE WHO YOU WANT TO BE.



SHOP.



EAT.



PLAY.



LIVE.



WORK.

ZONA
ROSA

ZONAROSA.COM

Located at I-29 & Barry Road
8640 N. Dixon Ave.
Kansas City MO 64153
816 587-8180



@ZONAROSAKC



HEALTH CARE

Helping You Feel Better

Life is good in the Northland, but sometimes you may feel a bit under the weather. The Northland prides itself in meeting all your medical needs — dental, urgent care or specialty care — we have you covered.

Audiologists

Associated Audiologists, Inc.

816-442-7831

www.hearingyourbest.com

Medical Groups, Healthcare Providers & Clinics

Clay County Public Health Center

816-595-4200

www.clayhealth.com

Direct Medical Care

816-431-2150

www.directmedicalcare.net

Focus HealthCare Solutions

816-628-5303

www.focusedhealth.com

Maple Wood Health Care Center

816-266-2626

www.communicarehealth.com

Meritas Health Briarcliff

816-691-2021

www.meritashealth.com

Meritas Health Corporation

816-691-2021

www.meritashealth.com

Meritas Health Gashland

816-691-2021

meritashealth.com

Meritas Health North Kansas City

816-691-2021

www.meritashealth.com

Meritas Health Occupational Medicine

816-691-2021

www.meritashealth.com

Meritas Health Park Plaza

816-691-2021

www.meritashealth.com



NORTHLAND CATHEDRAL

FIND US ONLINE AT WWW.NORTHLANDCATHEDRAL.ORG



Helping People Find Life, Hope, & Purpose

Join Us:

Sunday 9:15 AM Blended Worship Service

Sunday 11 AM Contemporary Worship Service

Wednesday at 6:30 PM Activities & Service

Thursday 7 PM Summit Young Adult Service

101 NW 99th Street, Kansas City, MO 64155 • (816) 455-2555

Meritas Health Vivion

816-691-2021

www.meritashealth.com**Northland Family Medicine/WIC**

816-365-8683

www.rodgershealth.org**Northland Health Care Access**

816-365-8683

www.nhcakc.org**Partners in Primary Care**

816-372-1989

www.youdeservepartners.com**Pinnacle Therapy Services**

816-891-7162

jsmith@usphclinic.com**Platte County Health Department**

816-606-5047

www.plattecountyhealthdept.com**Premier Integrative Health**

816-226-5050

www.premierintegrativehealthkc.com**The Urgency Room**

816-595-4000

www.theurgencyroom.com

Dental Care

Liberty Park Dental

816-415-8080

www.libertyparkdental.com**North Kansas City Dental**

816-471-2911

www.nkcdental.com**Zona Rosa Dental**

816-741-6200

www.zonarosadental.com

Dermatologists

**Dermatology & Skin
Cancer Center**

913-451-7546

jholmankc@usdermpartners.com

Hospitals

Children's Mercy Northland

816-413-2502

www.childrensmercy.org**Kindred Hospital Northland**

816-420-6300

www.khnorthland.com**Liberty Hospital**

816-792-7001

www.libertyhospital.org**North Kansas City Hospital**

816-691-2020

www.nkch.org**Research Medical Center**

816-276-9293

www.researchmedicalcenter.com**Saint Luke's North Hospital –
Barry Road**

816-880-6214

www.saintlukeskc.org/north**Saint Luke's North
Hospital – Smithville**

816-880-6214

www.saintlukeskc.org

Ophthalmologists

Dr. Audrey Blacklock

816-842-2015

www.somerseyecenter.com

Optometrists & Opticians

**Drs. Wes Johnson & Jill Dorsey –
Professional Eyecare**

816-468-1220

www.proeyekc.com**eyeSmith**

816-741-3937 (EYES)

www.eyesmithoptical.com**Wiles Eye Center**

816-455-2020

www.perfectsense.net

Physical Therapy

Affinity Sports Medicine, LLC

816-895-4900

www.affinitysportsmedicine.com**Modern Physical Therapy**

816-468-5278

www.modempt.com

Surgeons

Creekwood Surgery Center

816-455-4214

www.creekwood-sc.com

Women's Health

Diagnostic Imaging Centers, P.A.

816-455-5959

www.dic-kc.com**Imaging for Women**

816-453-2700

imaging4women.com

Catering for all occasions



Chick-fil-A Barry Road
816.587.0411



"Protecting People, Property, and Wildlife"

Got Critters?

We can help you get them out
and keep them out!

816-363-8727



www.crittercontrolofkansascity.com

kansascitymo@crittercontrol.net

Building Strong Families Across Kansas City



Imagining a world where every child is valued, and mothers and fathers are equipped to build strong families that positively impact our community.

Providing Free Services Including:
Limited Ultrasound | Parenting Classes | Material Support



6326 N. Lucerne Ave
Kansas City MO 64151
816.746.4855
PWC4Life.us



Top 100 Northland Attractions



NORTHLAND THINGS TO DO

1. Practice your best jumping moves at **Above All Trampoline Park**
2. Pick a bushel of apples at **Aldredge Orchard**
3. Catch a new release with friends at **AMC Theaters**
4. Try your luck on the slots at **Ameristar Casino Hotel Kansas City**
5. Swim at the large 50-meter **Anita Gorman Pool** designed for recreational and competitive swimming
6. Create a handmade work of art for your home at **AR Workshop**
7. Bring your best poker face and play at **Argosy Casino Hotel & Spa**
8. Enjoy peace and tranquility at the various exhibits and garden at **Atkins-Johnson Farm & Museum**
9. Watch a move in MX4D or ScreenX at **B&B Theaters in Liberty**
10. Camp at **Basswood Resort** in Platte City
11. Take a haunted tour or enjoy a glass of wine **Belvoir Winery**
12. Bring your appetite for beer and BBQ at **The Big Rip Brewing Company**
13. Challenge your friends to a game of pool at **Brass Rail**
14. Crack open a cold one with friends at **Calibration Brewery**
15. Pick a pumpkin, ride the kiddie rides, and pet the animals at **Carolyn's Country Cousins Pumpkin Patch**
16. Dine at Captains Corner, and get your photo taken at the large lawn chair at **Captains Corner in Paradise, Missouri**
17. Play pickleball and eat some delicious food at **Chicken N Pickle**
18. Enjoy pints and ciders on the patio at **Cinder Block Brewery**
19. Learn basic and advanced training at **Claycomo Shooters Indoor Range** and Gun Store
20. Explore the best of the Northland **Community Centers** – Kansas City,

- 
- Riverside, Gladstone, Liberty, YMCA, Excelsior Springs, North Kansas City, Line Creek, Platte County South, Platte County South, Claycomo
21. Enjoy live jazz music, poetry, and live performances at the **Corbin Theater in Liberty**
 22. Cool off in the summer with the many interactive water features at **Dagg Park**
 23. Test your disc golf skills at the **Disc Golf course at Hobby Hill**
 24. Experience classic, retro arcade games, pinball, skee-ball, and delicious eats and drinks at **Draftcade**
 25. Pick up a pickleball paddle, slide down the 3-story slide and play at **E.H. Young Riverfront Park**
 26. Scare your friends on a ghost tour at **The Elms Hotel and Spa**
 27. Jog along the river and take in the beautiful sights at **English Landing Park**
 28. Invite your best friends to drink, eat and tour the best of Excelsior Springs on the **Excelsior Springs Trolley**
 29. Learn about the Father of Kansas City, Francois Chouteau, and the Native Americans who founded Kansas City at the **Francois Chouteau and Native American Heritage Fountain**
 30. Gather friends for a unique wine experience in the region's only wine cave at **Fence Stile Vineyards & Winery**
 31. Sip on wines, sangrias and mimosas at **Four Horses and a Dog Winery**
 32. Celebrate fall with a family outing at the **Fun Farm in Kearney**
 33. Come play all the fun kid games at **Fun Run Kansas City**
 34. Bring your blankets and lawn chairs and enjoy a theater in the park performance and live music at **Gladstone Amphitheater**
 35. Try your luck at Galactic, glow in the dark bowling at **Gladstone Bowl**
 36. Discover the site of the first spring and medicinal mineral water at **Hall of Waters Visitors Center**
 37. Catch a live concert at the VooDoo Lounge at **Harrah's NKC Hotel & Casino**
 38. Practice your golf swing at **Hodge Park Golf Complex**
 39. Taste some delicious spirits at **Holladay Distillery**
 40. Tag your friends at underground recreation fields at **Jaegers Laser Tag** in Kansas City's oldest limestone mines
 41. Splatter your friends at paintball at **Jaegers Subsurface Paintball** at their underground and outdoor fields
 42. Walk where Jesse James walked at **Jesse James Farm and Bank Museum** where the first bank robbed in daylight occurred in the U.S.
 43. Tour the vineyards and take in a concert over wine at **Jowler Creek Winery**
 44. Bring your own food and beverage and learn how to play croquet at **Kactus Creek Croquet Club**
 45. Laugh until your belly aches at the **KC Improv Comedy Club & Dinner Theater**
 46. Enjoy concerts, outdoor movies and theater in the park at the **Kearney Amphitheater**
 47. Relax and reflect while enjoying high quality, affordable, hand-crafted wines at **Ladoga Ridge Winery** in Smithville
 48. Enjoy live music, festivals, and other fun events at **Linden Square**
 49. Try a little moonshine at Clay County's first small batch, handcrafted, moonshine distillery at **Little Platte Distillery**

50. Create custom craft projects at **Lost Arts**
51. Treat the entire family to bowling, laser tag, arcade games and more at **Main Event**
52. Sample some spirits of all kinds of unique, and fun flavors at **McCormick on Main**
53. Bring the whole family – from babies to adults – and take a ride on the **Miniature Railroad at Frank Vaydik Park**
54. Follow the path of the **Monarch Migration Art Walk on the Line Creek Trail** in Riverside
55. Enjoy Parkville's exclusive golf course, **The National** designed by champion golfer Tom Watson, and the stunning vistas and rolling hills at the **Deuce Golf Course**
56. Enjoy live Irish music, beverages and food in this impressive underground pub, **O'Malley's**
57. Slide, splash, chill and dine at **Oceans of Fun Theme Park**
58. Enjoy a game of golf by the region's largest lake at **Paradise Pointe Golf Complex**
59. Play basketball, volleyball, baseball, or futsal at the **Parkville Athletic Complex**
60. Play a round of mini golf and grab a scoop of Belfonte ice cream at **Parkville Mini Golf**
61. Hike on the 115-acre wildlife preserve and education site at the **Parkville Nature Sanctuary**
62. Learn how to shoot guns at the **Parma Woods Shooting Range**
63. Slide, climb and swing on the large animals at **Penguin Park**
64. Sip and paint with girlfriends at **Pinot's Palette**
65. Taste some of the northland's best wines and enjoy live music at **Pirtle Winery**
66. Grab your skateboard at **Platte City Skate Park** featuring a back and forth run, quarter pipe, mini ramp and more
67. Skateboard with friends on the ledges, stairs and rails at **Pleasant Valley Skate Park**
68. Race your friends in go-karts, and enjoy the rides at **Power Play**
69. Discover a sip of something new from the first Irish-American Distillery, and Missouri Distillery of the Year 2016-2020 at **Restless Spirits Distillery**
70. Play pond hockey, figure skate, or take skating lessons at **The Rink at Burlington Creek**
71. Roller skate with friends or family at **River Roll Skate Center**
72. Test your rock-climbing skills at **RoKC**
73. Explore the world's only known distillery in a cave, 65 feet underground at **S.D. Strong Distilling**
74. Taste more than 75 wines, craft beers and curated spirits at **Sail Away Wine bar**
75. Challenge your friends to a game of sand volleyball, and cool off at this outdoor bar, **The Sandbox**
76. Catch an old favorite flick or a new release with your favorite local beverage at **Screenland Armour Theater**
77. Grab a few friends and play a round of golf at **Shoal Creek Golf Course**
78. Picnic with the family, and enjoy the wildlife at this old town setting of the **Shoal Creek Living History Museum**
79. Play pool, darts, and catch a sports game at **Side Pockets**
80. Reserve your seat for dinner and a show at the **Slightly Off Broadway Theater**

81. Boat, fish, sail or swim at **Smithville Lake** and take advantage of the wonderful marinas, campgrounds, trails, boat rentals and picnic shelters
82. Tube or ski as a beginner, novice or expert at **Snow Creek**
83. Cool off at one of the many swimming pools, water slides, and lazy river at **The Springs Aquatic Center**
84. Play a round of golf at the championship style 18-hole course with a rustic clubhouse at **Staley Farms Golf Club**
85. Grab your friends or coworkers and hang at this next-generation golf entertainment venue, **T-Shotz**
86. Take golf lessons, or play in a tournament at **Tiffany Springs Golf Club**
87. Relax, unwind and fish at **Tryst Falls** in Excelsior Springs
88. Book a team retreat at the **Tucker Leadership Lab** with a ropes course, grounds course and other activities to foster leadership and teambuilding experiences
89. Learn about the story, history and major role TWA played in pioneering commercial aviation at the **TWA Museum**
90. Take in a slice of their famous brick oven pizza and delicious wines at **Van Till Farm Winery**
91. Take your pup out to **Waggin' Trail Off Leash Dog Park** to enjoy a walking trail, agility course, tunnel runs and water fountains
92. Sled down the best hills in the northland, or play disc golf at **Water Works Park**
93. Step onto the grounds of the only 19th century textile mill in the country with its original machinery still intact at the **Watkins Woolen Mill State Park and Historic Site**
94. Bike, hike and take in the scenic river views at **Weston Bend State Park**
95. Come thirsty, enjoy Scotch eggs and Bangers and Mash and take a tour of **Weston Brewing Company**
96. Play with farm animals, pick pumpkins, and enjoy a hayride at the **Weston Red Barn Farm**
97. Plan a birthday party or reunion at the **Winnwood Roller Skating Rink**
98. Test your axe-throwing skills at **WoodChux Axe Throwing**
99. Ride the rollercoasters, thrill rides and more at **Worlds of Fun**
100. Shop, dine, and explore all the fun activities with a date or group of friends at the **Zona Rosa**

Each city and county also have their own list of things to do on their websites:

- Clay County
- Platte County
- KCMO Parks & Rec
- Smithville Parks & Rec
- Gladstone Parks & Rec
- North Kansas City Parks & Rec
- Riverside Parks & Rec
- Liberty Parks & Rec
- Parkville Parks & Rec
- Weston Parks & Rec
- Missouri Department of Conservation
- Greater Kansas City Region

Commercial Residential Investment



Michael Meier
Principal & Realtor®
913.271.7656
mmeier@aristocrat-realty.com



Dagmar Wood
Realtor®
816.718.1650
dagmar@aristocrat-realty.com

10012 N Ambassador Dr, Kansas City MO 64153
info@aristocrat-realty.com | 816.200.7234



WORLD-CLASS EDUCATION

in the heart of Independence

Nursing Education Business

Nutrition & Human Performance

Data Science & Analytics and MORE

Classes online and on campus

**Find
out
more!**

admissions@graceland.edu
800.833.0524
www.graceland.edu



Graceland
UNIVERSITY | 1895

1401 W. Truman Road
Independence, MO 64050



Fudge, Chocolates, Ice Cream,
Bag & Weigh Candy, Salt-
Water Taffy, Local Honey and
Jams, 'Brides' locally roasted
coffee, Craft Soda Pop,
Flavored Popcorn, Subscription
Boxes. Melanoma educational
information corner.

Seasonal Treats include:
Caramel Apples, Cocoa Bombs,
Dipped Strawberries

115 E Main Street, Smithville, MO 64089

816-873-3663

nelliessweetshoppe@gmail.com

www.nelliessweetshoppe.com



Helping our youth become caring and
responsible men of the future!
You can help by volunteering by
calling **816-333-6455**.

You can also help by donating
online at www.urckc.org

UNIQUE INSURANCE FOR YOUR UNIQUE LIFE.

Maybe you dream of open land on a quiet ranch or a busy neighborhood filled
with kids playing together. Whatever it is, I'll be here to help you pursue your dreams.

Let's talk about your unique future, and how I can help you protect it.



Danielle Kohler, Agent

Danielle Kohler Agency LLC

Bus: (816) 792-3303

dkohler@amfam.com

daniellekohleragency.com



American Family Mutual Insurance Company, S.I. & Its Operating Companies,
American Family Insurance Company, 6000 American Parkway, Madison, WI 53783
©2016 011780 - Rev. 4/20 - 12888094





OUR PARKS

Like None Other

With extensive parks and trails, the Northland is a vibrant region to explore.

Enjoy the quiet, peaceful sounds of nature at E.H. Young Park in Riverside, the English Landing in Parkville or the award-winning Line Creek Trail that winds through the beautiful countryside of Platte County.

Residents and visitors in the Northland have access to multiple outdoor recreational activities

throughout the year, including the Gorman Pool, which opened in 2018; fishing and camping on Smithville Lake; golfing on beautifully-maintained public courses; and water attractions for families of all ages at Northland Community Centers.

The Northland Regional Chamber of Commerce and local municipalities have done excellent work in the addition of new multi-purpose trails, as well as keeping current trails in pristine condition.



WITH YOU. FOR YOU. READY TO HELP.
THAT'S ARVEST.

Need a more helpful bank? Excellent service?
Financial solutions? **We've got you covered.**

To learn more, visit arvest.com



ARVEST[®]
BANK

Member FDIC



Harnessing the power of co-creation to
design 21st century learning environments.



100%
DEDICATED TO
EDUCATION



GRATEFUL TO BE
DESIGNING THE FUTURE
WITH THE NORTHLAND



hollisandmiller.com | [f](#) [@](#) [in](#)

ASSISTED LIVING & MEMORY CARE *IN THE NORTHLAND*

Love
Where You Live

“ This is the most caring, compassionate
& loving community around!! The staff
treats the residents like their own family!
If you are looking for a place for your
loved one, then The Oxford Grand is
where you need to go!! I feel so blessed to
have found this place for my Mom! ”

- Liz G.



8280 N. Tullis Ave., KC, MO 64158 • OxfordatShoalCreek.com • [f](#) [OxfordGrandShoalCreek](#)



Virtual
tours
available!

(816) 787-0086



THE OXFORD
GRAND

YOUR DEGREE. YOUR WAY.

» ON CAMPUS

Beautiful Parkville and Gilbert campuses

» ONLINE

» CAMPUS CENTERS

39 campus centers nationwide

APPLY TODAY!

(816) 748-2530

onlineadmissions@park.edu

park.edu



PARK
UNIVERSITY SM



*Official higher education partner
of the Kansas City Chiefs*

Experience the Senior Star Difference



INDEPENDENT • ASSISTED • MEMORY

913.871.5686

seniorstar.com/wexfordplace



AL/MC# 43240





GET READY FOR A DELICIOUS MEAL

In the Northland, there are endless options of great restaurants to choose from for all ages and cuisines. The Northland offers a smorgasbord of casual and fine-dining eateries for delivery, carry-out, or a complete dining experience. No matter your taste or budget, there is something here for you!

We encourage you to check out the following restaurants that are Northland Regional Chamber members who support our communities:

Restaurants

Argosy Casino Hotel & Spa

816-746-3100
www.stayargosy.com

Captain's Corner

816-532-0442

Cascone's Restaurant & Lounge

816-454-7977
www.cascones.com

Chappell's Restaurant

816-421-0002
www.chappellsskc.com

Chef Tito's

816-841-7000
Americanfusion.cafe

Chick-Fil-A Barry Road

816-587-0411
www.chick-fil-a.com/locations/mo/barry-road

Corner Café

816-873-4545
www.thecornercafe.com

Dairy Queen

816-420-0965
edensmithcorp@yahoo.com

Harrah's Kansas City Casino & Hotel

816-472-7777
www.caesars.com

Hawaiian Bros

541-556-4910
www.hawaiinbros.com

Hereford House

816-584-9000
www.herefordhouse.com

Jason's Deli

816-994-8891
www.jasonsdeli.com

Jefferson's

816-832-8128
www.jeffersons.com

Jose Peppers

816-415-3155
www.josepeppers.com



Platte-Clay Electric Cooperative
A Touchstone Energy® Cooperative

YOUR POWER  YOUR WAY

Platte-Clay Electric Cooperative empowers consumer-members with the tools they need to make smart energy choices. Energy efficiency incentives, green power options and demand-based billing means endless possibilities for PCEC members. It's easier than ever to take control and save.

LEARN MORE AT WWW.PCEC.COOP/POWER

Terrace Park
Funeral Home & Cemetery
Healing Begins Here



(816) 734-5500
801 NW 108 St., 169 Hwy & Shoal Creek
Kansas City, MO 64155
www.terraceparkfuneralhome.com

@WORK

Whether You're New to Our Community or a Lifelong Resident, Let AtWork Be Your Staffing Choice!

Temporary | Direct Hire
Part Time | Full Time

AtWork Liberty
816-781-2500
AtWork.com/Liberty

AtWork Lee's Summit
816-875-5152
AtWork.com/Leessummit

AtWork Overland Park
913-221-0677
AtWork.com/Overlandpark



Jousting Pigs BBQ

816-702-7555

www.JoustingPigsBBQ.com**Lutfi North**

816-216-1503

dvalentine6@outlook.com**McDonald's of Barry Pointe**

816-792-1124

www.mcdonalds.com**Nick and Jake's Parkville**

816-584-8535

www.nickandjakes.com**Piropos**

816-741-3600

www.piroposkc.com**Rancho Grande Cantina**

816-718-4370

www.ranchograndecantina.com**Red Robin**

913-706-4502

www.redrobin.com**REDDOOR Woodfired Grill**

816-946-8000

www.reddoorgrill.com**Scott's Kitchen**

816-270-0505

www.scotts-kitchen.com**Smokehouse BBQ Gladstone**

816-454-4500

www.smokehousebbq.com**Smokehouse BBQ KCMO**

816-587-3337

www.smokehousebbq.com**Summit Grill- Northland**

816-768-6100

summitgrillkc.com**Tasty Thai/Big Bowl Pho**

816-308-3336

www.kctastythai.com**Texas Roadhouse**

816-741-7427

www.texasroadhouse.com**Trezo Mare Restaurant**

816-505-3200

www.trezomare.com**T-Shotz**

816-589-9464

www.tshotz.com**Wings Café**

816-413-9464

www.thewingscafe.com***Dine in/Curbside/Catering***

Temporary hours:

Sun & Mon 11:00 AM-9:00 PM

Tuesday-Saturday
11:00 AM - 10:00 PM11015 NW Hwy 45
Parkville, MO 64152**816-505-9097***"Protecting People, Property, and Wildlife"***Got Critters?**We can help you get them out
and keep them out!**816-363-8727**www.crittercontrolofkansascity.comkansascitymo@crittercontrol.net

OUTLOOK: **EXCEPTIONAL**



Forget what you know about small towns. Riverside is anything but. On the verge of smart, sustainable growth, the town of more than 3,000 residents offers the feel of a close-knit community, but one where new life, growth and possibilities are easy to find and hard to pass up. Roots run deep here. Neighborhoods thrive. And a diverse mix of new and existing housing lies within one of the metro area's highest-rated school districts. Put it all in a location just minutes from downtown Kansas City, and it adds up to a place you want to call home. That's Riverside.

www.riversidemo.gov



North Kansas City Schools

A Champion for Students

Educating KC's Northland since 1913



www.nkcschools.org



NORTHLAND BY THE NUMBERS

City Halls/ Northland Communities

Avondale

3007 Walker Roadhouse
Kansas City, Mo 64117
816-453-7710

Birmingham

510 Spratley
Birmingham, Mo 64161
816-454-5539

Claycomo

115 E Highway 69
Claycomo, Mo 64119
816-452-5539

Excelsior Springs

201 E Broadway
Excelsior Springs, Mo 64024
816-630-0752

Gladstone

7010 N Holmes
Gladstone, Mo 64118
816-436-2200

Glenaire

PO Box 766
Liberty, Mo 64068
816-792-4907

Houston Lake

5417 NW Adrian Ave
Houston Lake, Mo 64151
816-741-0644

Kansas City

414 E 12th St., #105
Kansas City, Mo 64106
816-513-3600

Kearney

100 E Washington St.
Kearney, Mo 64060-0797
816-628-4142

Lake Waukomis

1147 NW South Shore Drive
Lake Waukomis, Mo 64151
816-741-2079

**INDEPENDENT LIVING • ASSISTED LIVING
SHORT-TERM REHAB • LONG-TERM CARE**



PURPOSE PASSION *Joy in Life*

Moving to a continuing care retirement community like Linden Woods Village gives you and your family the security of knowing that your needs will be cared for in the future regardless of what the future holds. This peace of mind can be one of the greatest gifts that you can give to your family.

No matter your life situation, there is a place for you at Linden Woods Village.



**CALL 816.268.4000
TO SCHEDULE A TOUR**

2901 NE 72nd St
Gladstone, MO 64119
LindenWoodsVillage.com
816.268.4000



Liberty

101 E Kansas
Liberty, Mo 64068
816-781-7100

North Kansas City

2010 Howell St
North Kansas City, Mo 64116
816-274-6000

Northmoor

4907 NW Waukomis Dr
Northmoor, Mo 64151
816-741-6071

Oakview

6404 N Locust, P.O. Box 10766
Kansas City, Mo 64118
816-436-9150

Oakwood Park

418 NE Moreland Dr.
Kansas City, Mo 64118
816-453-5964

Parkville

8880 Clark Ave.
Parkville, Mo 64152
816-741-7676

Platte City

400 Main St..
Platte City, Mo 64079
816-858-3046

Platte Woods

Platte Woods, Mo 64151
816-741-6688

Pleasant Valley

6500 Royal St.
Pleasant Valley, Mo 64068
816-781-3996

Randolph

7777 NE Birmingham Rd
Randolph, Mo 64161-9463
816-455-0200

Riverside

2950 NW Vivion RD
Riverside, Mo 64150
816-741-3993

Smithville

107 W Main St
Smithville, Mo 64089
816-532-3897

Village of Oaks

821 NE Doris Ave
Village of Oaks, Mo 64118
816-454-0089

Weatherby Lake

7200 NW Eastside DR
Weatherby Lake, Mo 64152
816-741-5545

Weston

300 Main St
Weston, Mo 64098
816-640-2752

Other Helpful Numbers

Better Business Bureau

816-421-7800

Economic Development

Clay County

816-468-4989

Platte County

816-270-2119

Kansas City Area Development Council

816-221-2121

Mid America Regional Council

816-474-4240

Northland Regional Chamber of Commerce

816-455-9911

Population 2020

Clay County 253,335

Platte County 106,718

Transportation

Air

Kansas City International Airport
(MCI)

Highway

- 3 Interstates (I-70, I-35, I-29)
- 4 Interstate linkages (I-435, I-635, I-470, I-670)
- 10 federal highways
- Public transportation: Kansas City Area Transportation Authority – The Metro

Rail

Travel by Amtrak trains
Fun fact: Kansas City is the second largest rail center in the U.S!



TWIN CREEKS IS NOW OPEN!

VISIT OUR NEW BRANCH:

We are thrilled to announce the opening of our newest branch in the Twin Creeks Shopping Center, located at 8451 N. Madison Avenue, Kansas City, Missouri.

PERSONAL • BUSINESS • INVESTMENTS

mainstreetcu.org

Federally Insured by NCUA

AD INDEX

American Family Insurance – Danielle Kohler	Page 25
AR Workshop Kansas City North	Page 9
Aristocrat Realty	Page 24
Arvest Bank - Gladstone	Page 27
Assistance League of Kansas City	Page 10
Atwork Personnel	Page 31
Chick Fil A	Page 19
Citizens Bank & Trust - KC	Page 3
City of Riverside	Page 33
Critter Control	Page 19 & 32
Express Employment Professionals	Page 11
Full Potential Solutions	Page 7
Graceland University	Page 24
Hollis and Miller Architects	Page 28
Linden Woods Village	Page 35
Lite It Up LLC	Page 2
Longview Funeral Home	Page 31
Mainstreet Credit Union	Page 37
Maple Woods Community College	Page 14
Missouri Western State University	Page 10
Nellie's Sweet Shop	Page 25
North KC School District	Page 33
Northland Cathedral	Page 17
Oxford Senior Living	Page 28
Park University	Page 29
Parkville Womens Clinic	Page 19
Platte-Clay Electric Cooperative	Page 31
Rancho Grande Cantina	Page 32
Sheet Metal Workers Local Union 2	Page 39
Storage 1 KC	Page 40
The Hillcrest Thrift Shop	Page 5
Trademark Property	Page 15
Urban Ranger Corps	Page 25
Wexford Place	Page 29
YMCA North Kansas City	Page 4

SHEET METAL | AIR | RAIL | TRANSPORTATION



SHEET METAL WORKERS' LOCAL No. 2

SMART Local #2
2902 Blue Ridge Blvd
PO Box 300378
Kansas City, Mo 64130

STORAGE1KC

WE ARE EXCITED TO ANNOUNCE OUR NEW AND
CONVENIENT LOCATION IN THE KC NORTHLAND!

- 24/7 Surveillance
- Office Manager
- Gated access
- Brand New Facility
- Climate Controlled Units
- Unit Sizes for All Needs
- Elevator Access
- Locally Owned and Operated



VIEW OUR RATES ONLINE
www.storage1kc.com

8331 N Green Hills Rd,
Kansas City, MO 64151

